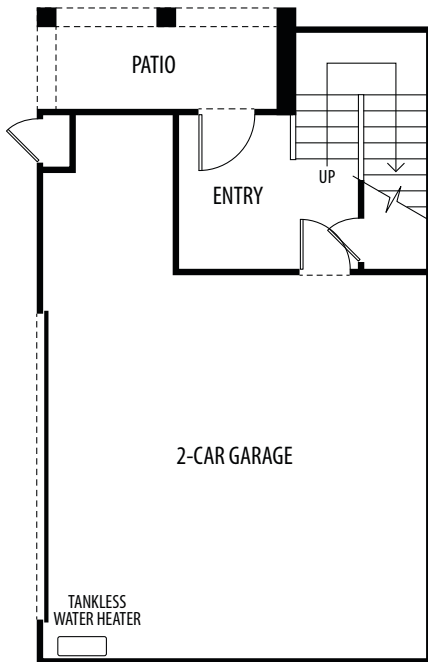




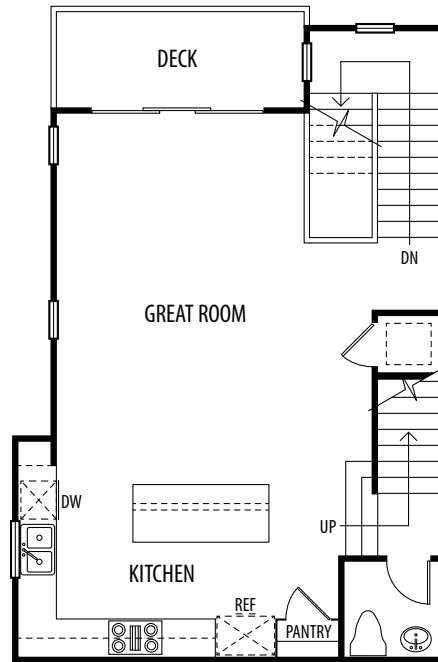
PLAN D

BUILDINGS 4 | UNITS 6 • 11

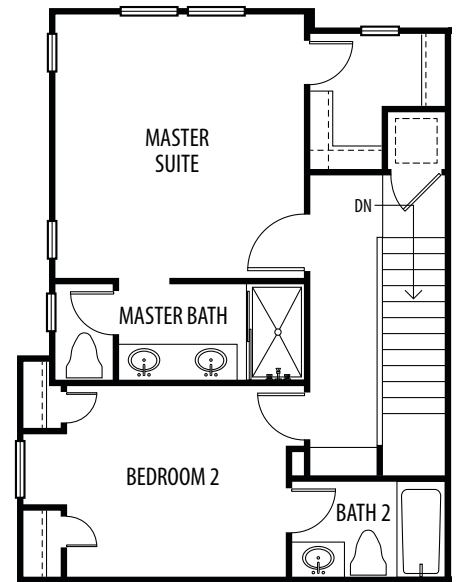
1,313 Sq. Ft. 🌊 2 Bedrooms 🌊 2 Baths 🌊 Expansive Great Room
 Gourmet Kitchen with Pantry 🌊 Large Deck off Great Room
 Walk-In Closet in Master Suite 🌊 2-Car Garage



FIRST FLOOR



SECOND FLOOR



THIRD FLOOR

619.838.0660

BeachWalkLife.com/Roosevelt

The builder reserves the right to modify plans, features, specifications and prices without notice or obligation, including any of the features listed above. All square footages and dimensions are approximates only and may vary per plan and elevation or from the actual home constructed. All renderings, brochures and marketing materials are concepts only, not intended to depict actual homes and are subject to change. DRE#01194822

